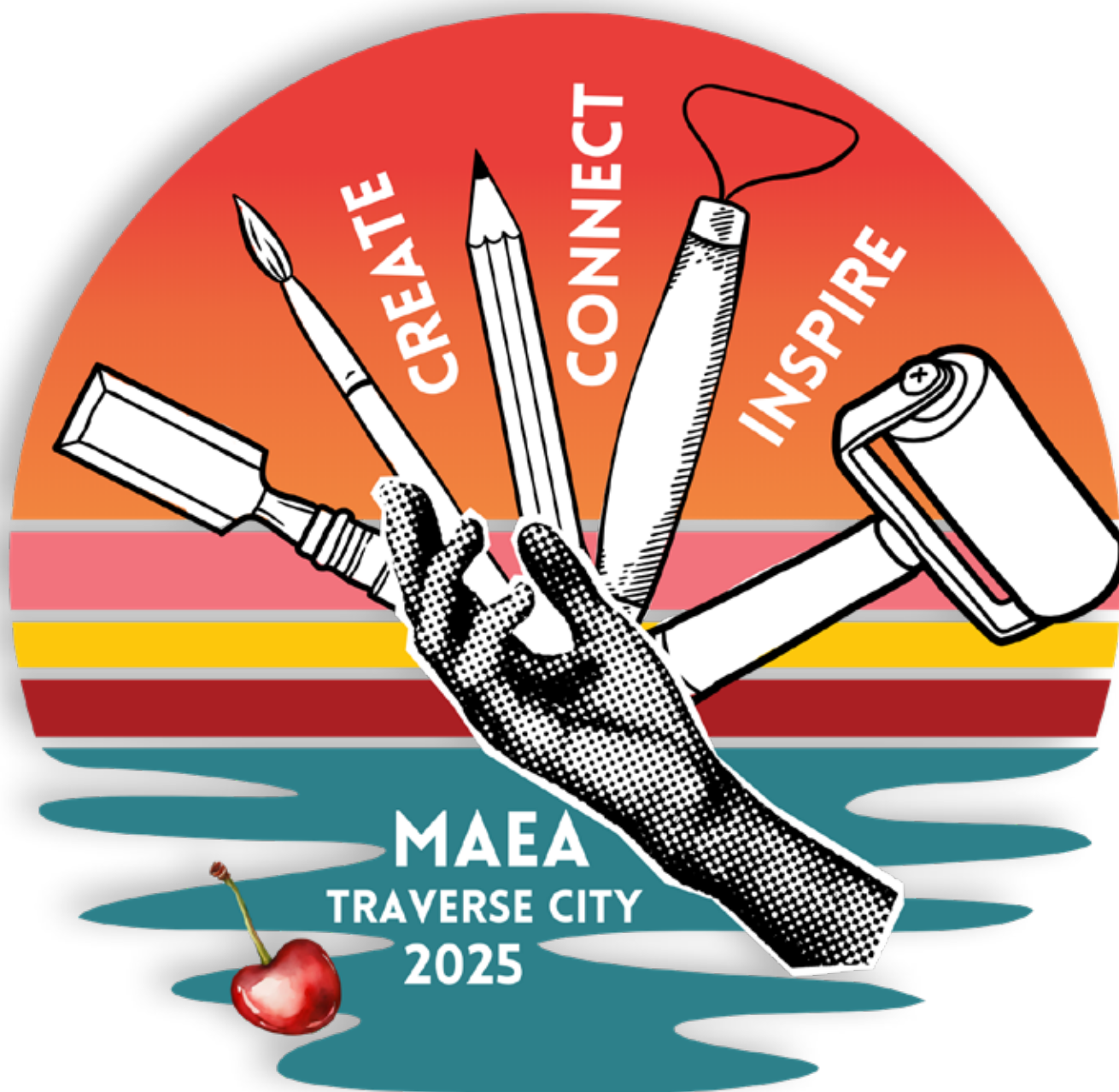




# ArTeacher

Issue No. 100

[miarted.org](http://miarted.org)



**FALL CONFERENCE ISSUE**

The Michigan Art Education Association's mission is to promote quality visual arts education through leadership, service, and professional development.

## CONTENTS

President's Message .....	3
President-Elect's Message .....	4
Past President's Message .....	5
Vice President's Message .....	5
Museum Educator Message .....	7
NAEA Delegate .....	8
Welcome – 2025 Conference .....	11
Hotel Registration .....	11
Conference Registration Information .....	12
Thursday Events .....	13
Friday Events .....	14
Saturday Events .....	16
Sunday Events .....	19
Hotel Floor Plan .....	22
Conference Information & Policy .....	25



President

Jane Montero

Past President

Annie Howard

President-Elect

Illya Tolbert

Vice President

Roger Drabant

Executive Council

Sarah Griesinger, *Treasurer*

Kristyn DeMint *Secretary*

Jackie Whiteley, *Membership*

Erica Davis-Hernandez, *NAEA Delegate*

Executive Secretary

Communications

Jane Inhulsen

Contact

[www.miarted.org](http://www.miarted.org)

[inhul2@gmail.com](mailto:inhul2@gmail.com)

**ENJOY the ArTeacher in FULL COLOR!**  
Scan the QR Code or go to:  
<https://www.miarted.org/resources.php>  
and scroll down to *Publications*.



MAEA ArTeacher is published three times per year: January, May, and September by the Michigan Art Education Association. Publications for Spring/Summer and Fall are in newsletter format published as full editions and are posted on the website. The Winter publication is in micro-newsletter format with the full edition posted on our website.

Annual Membership includes membership and publications for both the National Art Education Association and the Michigan Art Education Association: \$100 [Active Membership], \$100 [Associate], \$70 [Retired], \$85 [First Year Professional], \$50 [Student], \$225 [Institutional].

Post Master send address changes to:

Jane Inhulsen  
18674 Goldwater Road  
Westfield, IN 46062

Deadlines for submitting material to the MAEA ArTeacher:

**April 1 – Spring/Summer**

**July 1 – Fall**

**November 1 – Winter**

To submit, please email articles to: [inhul2@gmail.com](mailto:inhul2@gmail.com).

Graphic Designer: Amy James

Editor: Jane Inhulsen

Copy Editor: Harvey Goldstein

## PRESIDENT'S MESSAGE

[president@miarted.org](mailto:president@miarted.org)



**Jane  
Montero**

### WELCOME TO THE 2025-2026 ACADEMIC YEAR!

I hope you have returned to your classroom refreshed and ready to make a difference in the lives of your students. Making a difference includes recognizing and building a strong community within the walls of our classrooms and office spaces. Building community is essential for fostering creativity, collaboration, and personal growth. When students feel safe, supported, and connected to their peers, they are more willing to take creative risks, share ideas, and engage deeply in the artistic process. Maintaining a strong classroom community encourages respect for diverse perspectives and cultivates an inclusive environment where every voice is valued.

The theme of this fall's annual conference, Create, Connect, Inspire, perfectly captures the essence of building community in the art classroom. When students create together, they form meaningful connections that foster trust, empathy, and collaboration. These connections inspire a supportive learning environment where creativity can thrive and every student feels valued. I hope you can join us at the Grand Traverse Resort and Spa in Traverse City, November 13-16th for a wonderful weekend of learning, creating, and connecting with colleagues.

At the end of last school year, I attended the Western Region Leadership Convention in Wichita, Kansas. Our mornings were spent reviewing association bylaws, constitutions, and strategic plans; while in the afternoons we ventured out to Wichita State University's art building and museum, and the Wichita Museum of Art. Attending summer leadership events always recharges my passion and inspires me to grow both as an art educator and as a leader.

Speaking of leadership, MAEA is looking for members to serve in various leadership roles. After our fall conference concludes, we will be sending out a ballot and seeking your vote for President-Elect, to begin in January 2026. Please join us at our fall business meeting to hear about open positions, including region liaisons and other chair positions. Whether you are new to our association or have been an active member for years, leadership is a fantastic way to deepen your involvement, share your unique strengths, and help shape the future of art education in our community.

If you have questions about leadership in MAEA, please reach out to me. I'm happy to help you make connections with council members serving in various roles. We are here to support you in your own leadership path.

Cheers to a successful fall season and I look forward to seeing you in person in November!



## PRESIDENT-ELECT'S MESSAGE

[presidentelect@miarted.org](mailto:presidentelect@miarted.org)



**Illya Tolbert**

***"I'm goin' to Wichita***

***Far from this opera forevermore"***

– Jack White

As a new school year begins, we're excited to welcome you back to your classrooms. Whether you're returning with familiar routines or exploring fresh ideas, know that your creativity, care, and commitment make a lasting impact on students every day. MAEA is here to support you with opportunities to connect, grow, and celebrate the power of art education all year long. I really hope you can attend this year's fall conference at the Grand Traverse Resort in Traverse City, November 13-16. Let's make this a vibrant and inspiring year together!

This summer, I attended the NAEA Western Region Leadership Conference in Wichita, Kansas. It's always energizing to connect with other art education leaders from across the Western Region. I went in knowing very little about Wichita. I left impressed by its charm and surprisingly vibrant art scene.

Highlights of the trip included a hands-on printmaking project at the Ulrich Museum located at Wichita State University and a visit to the Wichita Art Museum—home to an excellent collection of American art, including a significant focus on Native American artists. We also took a relaxing stroll along the scenic Riverwalk. Along the way, we saw the Keeper of the Plains, a striking 44-foot-tall steel sculpture by Kiowa-Comanche artist Blackbear Bosin, located at the confluence of the Arkansas and Little Arkansas Rivers. I loved exploring the city and learning from inspiring colleagues. I'm excited to bring new ideas and fresh energy back to Michigan!

Also at the NAEA Western Leadership Conference, we discussed how art educators can be powerful voices for the value of creativity, visual literacy, and student expression. Advocacy is essential to sustaining and growing quality art education in our schools. Whether it's speaking to administrators, engaging families, or sharing student work with the community, advocacy helps ensure that the arts remain a vital part of every child's education.

*Photos of Wichita Riverwalk  
and "Keeper of the Plains"*





## PAST PRESIDENT'S MESSAGE

[pastpresident@miarted.org](mailto:pastpresident@miarted.org)



**Annie Howard**

## VICE PRESIDENT'S MESSAGE

[vicepresident@miarted.org](mailto:vicepresident@miarted.org)



**Roger Drabant**

### Important Vote on State Constitution, Bylaws, and Job Descriptions Coming Soon

After more than three years of careful work, collaboration, and thoughtful revision, our state association is ready to present updates to the Constitution, Bylaws, and Job Descriptions to our membership for a vote. These changes reflect the voices of many members and were made in response to updated requirements from both the National Art Education Association (NAEA) and state guidelines, as well as the need to modernize outdated communication practices.

The revised documents aim to better support the work of our organization and ensure we are aligned with current best practices and legal expectations. Members will receive a copy of the proposed changes via email at least 30 days before the vote to allow ample time for review.

The vote will take place in person at the state conference, specifically at the registration desk. According to our bylaws, we must receive a two-thirds vote of the full membership for the changes to be approved. Members who are not able to attend the conference in person will be provided with a ballot via email.

Your participation in this vote is crucial to the future of our organization. Please watch your inbox for the proposed updates and be ready to make your voice heard.

I hope that the summer allowed you to refresh, giving you time with family, friends, and pastimes that the school year doesn't provide. As we move into fall, I want to keep you posted on things coming up this spring. Before you know it, it will be Art Show time again. This year the MAEA State Show will once again be hosted by the Hickman Gallery on Adrian College's campus. For those of you who were able to make the show and reception, and for those of you who were not able to attend and bask in the hospitality of Adrian College and the Hickman Gallery, you will want to place this year's closing reception on your calendar. In addition to the Top 100 pieces from each division, this year's show will also showcase the MDE show in a dedicated area of the gallery. The MDE pieces will then be taken to the Michigan Department of Education after the State Show closes. This year we will also have a dedicated space for the GTS, Governors' Traveling Show, to honor those students in an elevated way.

**Please keep the following dates in mind as you plan for the Spring Art Show Season:**

**MAEA March Meeting and Art Drop off:** February 28, Location TBD due to the NAEA Convention March 5-7

**Installation:** Sunday, March 15

**Exhibition:** March 16 – March 28

**Reception:** Saturday, March 28th 11:00 – 2:00, with take down and dispersal immediately following



BLUELAKE.ORG  
800.221.3796

# DRAWING FIBERS CERAMICS PRINTMAKING SCULPTURE PAINTING

## VISUAL ARTS PROGRAM

All young artists welcome | Grades 7-12

Two-week sessions in June, July, and August

Scholarships and Financial Aid Available

blue lake<sup>TM</sup>  
fine arts camp



Grace VanderVliet

### Levels of Leadership

As I write this, I'm getting ready to attend the School for Art Leaders (SAL) at Crystal Bridges Museum of American Art in Bentonville, Arkansas. One of our cohort's preparatory tasks is to study a chart of *Core Leadership Competencies*, then select three strengths and three growth areas. The NAEA Leadership Development Task Force identifies these competencies as essential for an art educator to excel as a leader. In broad strokes, the four top-level categories move from personal to global:

- **SELF** (awareness, ethics & integrity, adaptability)
- **OTHERS** (communication, building strong teams & relationships, sharing power)
- **ORGANIZATION** (vision & strategy, managing change, evaluating programs & budget)
- **EXTERNAL FOCUS** (policy, ecosystems, advocacy, networking)

The chart clearly diagrams how these four areas co-exist. Sometimes we inhabit one area longer than another, float between internal and external communication tasks, or prefer not to dwell in areas that are challenging – for me, that would be budgeting.

Reflecting on which skills come naturally and which require more “work,” has shed light on why certain tasks fall to the bottom of my list, why I need encouragement to delegate, and why it's helpful for me to regularly schedule time with a colleague to look over spreadsheets (accountability!).

I'm looking forward to learning more about this framework – and about my tendencies – at School for Art Leaders and can't wait to share more. SAL alumni will present a panel about our leadership journeys and learnings at the conference in Traverse City, and I hope to see you there. Also, I plan to distribute the full diagram to Michigan Museum Educators, encourage us all to sit with it for a bit, and perhaps to share with our colleagues to develop a team-wide reflective practice.

Visit MAEA's website

[miarted.org](http://miarted.org)

for a full color version of the newsletters. Go to Resources and then Publications.

naeadelegate@miarted.org



**Erica  
Davis-Hernandez**

## Summer Art Making

Time for family, time to rest, and rejuvenate. That appears to be different for everyone. When my kids were little, it was early mornings, VERY early mornings, with trips to the zoo, a beach, a metropark or a backyard picnic full of fun moments and listening to children goggling between the arguments. It took me several years before I had time to make my own art again. I loved darkroom photography and ceramics but the little kid had me try watercolor as it allowed me to toss the water in the grass or sand and shove everything in my bag with the ability to wash the brushes later. I planned to work on several art pieces over the summer but alas, plans always seem to change.

As I began to write this, I was a few days out from surgery to repair several breaks in my left arm aided by a permanent metal plate and pins, along with scrapes and bruises in several other areas. While I lamented missing the NAEA Western Leadership Conference in Wichita, Kansas, I also enjoyed all the special media posts showcasing the camaraderie, art making, learning and growth opportunities for so many state leaders including our president and vice president with MAEA. As I returned from the NEA Annual Representative Assembly and the NEA Conference on Racial & Social Justice (CRSJ), held in Portland, Oregon, I realized my body needed more post-op time to recover and should have skipped attending that as well.



*Amy Sherald  
at The Whitney*

While I had a harrowing experience with a double arm break after a rogue scooter almost ran us over in June, I had four great days exploring NYC with my son and his boyfriend, Aziz, before the accident. *Cabaret on Broadway* starring Orville Peck and Eva Noblezad, The MET Cloisters, Amy Sherald's solo show at The Whitney, iconic architecture, ferry and subway rides, Photoville Exhibit in the Brooklyn Bridge Park and The Queens Museum where Aziz works were part of my artful NYC adventures. A definite highlight was seeing both Sherald's paintings of Michelle Obama and Brianna Taylor. Roland was excited to see fellow Pinoy, Eva Nobkezad, star in *Cabaret* and he wants to go back to the Cloisters and Fort Tryon Park with the old stone walls and lush green walking paths. I enjoyed the art at the Queens Museum, especially a large painting celebrating the Filipina diaspora of nurses to the US in the 1960's and 70's, along with an exhibit and permanent collection of work celebrating the 1965 World's Fair. I was surprised by Photoville; a huge free outdoor photography exhibit that runs every year for a few weeks in June. It was full of award-winning sports, documentary, political, and



*Photoville,  
Brooklyn, NYC*



*The MET Cloisters,  
Manhattan, NYC*



architectural photography. Some were on vinyl outside while others were mini galleries inside shipping crates. The two separate exhibits of the impact of the war and damage in Israel and then the Gaza Strip brought us to tears while we were able to smile once we viewed the celebration of Mr. Rogers; seeing images of Mr. Rogers laughing with people from all walks of life and sitting on his couch brought us joy. I am always surprised by the emotional impact art makes. We could have spent the entire day there!

On a sad note, in the spring, I lost a former student; she lost her struggle with diabetes. Ashley was a bold, feisty, funny and a talented artist. I reconnected with her early during the pandemic (her long-term boyfriend had just passed from covid) and Ashley was buying groceries for the post-funeral luncheon at their home. Ashley saw me in my car and was so excited that she took her mask off and wanted me to come to her house and show off her new art along with some of the pieces she had saved from her high school ceramics class with me. We laughed and stayed connected. Ashley became a phenomenal tattoo artist, specializing in color and scar coverage. Ashley did a cover up for me and I cherish having a piece of her art on my body.

The purpose of sharing Ashley's story is not to add sadness to your life, rather it is to remind you that you matter. You make an impact with your students, young and old, that is immeasurable. Whether you give out free hugs to the littles, open up your room at lunchtime, stay late entering art into contests and shows or just make time to have a conversation with someone, even when you have other work to do - you are creating a safe space for someone. You are their safe person to connect to. Don't forget how special you are. Good luck with the 2025-2026 school year!

Consider joining your fellow colleagues at a NAEA convention in the future. The 2026 conference will be in Chicago, March 5th-7th. Now is the time to ask your district and administration for approval to attend. I hope to see you in Traverse City this November!



*Queens Museum,  
Flushing, NYC*



*Michelle Obama  
Portrait  
by Amy Sherald*



*DUMBO, Brooklyn, NYC*



# Wire and Watercolor Forms

Lesson Plan for Grades 5–12



**Bend:** Make expressive *lines* by bending, curving, or looping sculpture wire.



**Join:** Arrange wire lines into *shapes* and join using bending or pliers. Cover with rice paper brushed with diluted glue to make a three-dimensional *form*.



**Paint:** After paper has dried and hardened, paint the sculpture using liquid watercolor.

Learn how a *line* becomes a *shape* that transitions to a *form* in this simple abstract sculpture-making process.

Students will grasp concepts of 3D art as they use wire and paper to create open, expressive forms.

**CHECK OUT NEW** lesson plans and video workshops for students of all ages at [DickBlick.com/lesson-plans](https://www.dickblick.com/lesson-plans).



SCAN TO VIEW  
LESSON PLAN



Request a  
**FREE 2025**  
Catalog!  
[DickBlick.com/  
customer-service/  
catalogs/](https://www.dickblick.com/customer-service/catalogs/)

**BLICK**<sup>®</sup>  
[DickBlick.com](https://www.dickblick.com) 800•447•8192





Liz Celeste  
Sarah DeKett  
Mary Hall

# WELCOME!

## Meet your Traverse City Co-Chairs! Welcome to the MAEA Fall 2025 Conference from Liz, Sarah, and Mary!

We are so excited to host you in Traverse City! We made it our goal to give you many professional and delightful experiences to choose from. Let's **CREATE**, **CONNECT** and **INSPIRE** each other! We hope you leave this conference feeling refreshed, energized and full of ideas to return home with..

We have a unique array of events to share with you including:

- Four keynote speakers
- A welcome event including a dance performance and open galleries at the Dennos Museum Center
- A zine-making workshop to **CREATE** with our keynote speaker
- A pajama party
- Awards Reception
- Social hour and Artisans' Market to **CONNECT**
- Silent Auction
- Over 100 workshops and presentations to choose from!
- And the cherry on top, our fashion-focused TASK party to **INSPIRE**!

Additional Note: As a registered attendee, you will have access to our Whova App using your registered email. When published, you can begin building your agenda, setting your profile, and planning your days! ***It is important that you use the same email address for registration and Whova.***

A user guide with the information to ensure that your conference is a wonderful and meaningful experience will become available closer to the conference date!

Traverse City is the place to be November 13-16, 2025. The Traverse City Co-Chair team is looking forward to creating art, connecting with each other and inspiring future generations with you!

Liz Celeste | Sarah DeKett | Mary Hall

## HOTEL REGISTRATION



**Grand Traverse Resort**  
**Grand Traverse Village Blvd, Acme Township, MI 49690**  
**[www.grandtraverseresort.com](http://www.grandtraverseresort.com)**

Grand Traverse Resort and Spa is just six miles northeast of Traverse City, Michigan and only 10 minutes from Traverse City's Cherry Capital Airport, which is served by major carriers.

Go to: <https://www.grandtraverseresort.com/explore/getting-here> to access a map of the Grand Traverse Resort's location. If you enter your address, you'll get driving directions that will ensure your arrival to the hotel is hassle-free. Parking is complimentary.

### Rates

> \$169 Standard room per night excluding tax

> \$229 Tower room per night excluding tax

Book your reservation here: <https://book.passkey.com/go/MAE1125>

Group code: **MAE1125**

Group block cut-off date: October 13, 2025

Call to book 231-534-600,  
mention **Michigan Art Education Association**

### Hotel Layout Maps

View the hotel layout here:

[https://www.grandtraverseresort.com/pdf/2018\\_GTRS\\_Grounds\\_Map.pdf](https://www.grandtraverseresort.com/pdf/2018_GTRS_Grounds_Map.pdf)

Seen on page 22 of this newsletter.



## CONFERENCE REGISTRATION INFORMATION

### CONFERENCE CHECK-IN AND ONSITE REGISTRATION LOCATION & TIMES

All conference attendees will check-in at the MAEA registration desk at the Grand Traverse Resort **Lower Level Tower Desk**. It is highly recommended that members pre-register for the conference. Although conference registration may be completed onsite upon arrival, fees are higher and will also mean standing in significantly longer lines with less chance of obtaining desired tickets to workshop sessions being offered.

### REGISTRATION HOURS

**Thursday**  
3:00 p.m. - 6:00 p.m.

**Friday**  
7:00 a.m. - 7:00 p.m.

**Saturday**  
7:00 a.m. - 2:00 p.m.

Online Pre-Registration will begin on **September 1, 2025** and close on **October 31, 2025**.

*This is the absolute, final day for online registration; there will be no extensions this year.*

To Log in: <https://conference.miarted.org/login>

#### Pre-Registration Costs:

##### Full Conference:

- Member - \$180
- Retiree - \$90
- Pre-Service Student - \$85
- Guest - \$100\*

##### Saturday & Sunday Option:

- Member - \$130
- Retiree - \$70
- Pre-Service Student - \$70
- Guest - \$100\*

#### ONSITE: Full Conference

- Member - \$250
- Retiree - \$140
- Pre-Service Student - \$105
- Guest - \$175\*

#### ONSITE: Saturday & Sunday Only

- Member - \$220
- Retiree - \$100
- Pre-Service Student - \$110
- Guest - \$175\*



\* Children must also register for the conference and meals

## VISIT THE VENDORS



Don't forget to visit the vendors who will be located in the Governors' Hall at the Grand Traverse Resort. Learn about the latest techniques, test products, and talk with amazing representatives from art related companies and colleges. Not only will you receive great information, but vendor swag will be given away. Stop by the MAEA Vendor Booth to receive your Vendor Giveaway tickets and learn how you may win big! Winners will be announced at the keynote events.

**Friday: 10:00 a.m. – 5:00 p.m. | Saturday: 10:00 a.m. – 3:00 p.m.**



## SCECH INFORMATION

State Continuing Education Clock Hours (SCECH) may be earned by attending MAEA approved workshops, tours, and lectures. The cost is **\$10 for the conference** – up to 25 hours. Each presenter will be given a QR code for members to scan and fill out a Google Form about the session information to receive credit for SCECHs.

## CONFERENCE EVENTS

*The Traverse City Co-Chair team would like to thank all of our presenters for sharing their expertise in art education as we **create, connect and inspire** each other at our annual conference. We have maximized the space with over 100 workshop opportunities! In addition to the workshops, we would like to highlight some of our special upcoming events.*

**Thursday,  
November 13**

**Check-In/Onsite Registration is at the  
Grand Traverse Resort Lower Level Tower Desk from 3:00 - 6:00 p.m.**

**5:30 - 8:30 p.m.**

**Welcome Event at Dennos Museum Center**



We are kicking off our conference with an evening to connect with each other at the Dennos Museum Center on the beautiful community college campus of Northwestern Michigan College. *This is an offsite location at 1410 College Dr, Traverse City, MI 49686. If you are pre-registered for the conference and have a ticket for this event, you may go directly to the Dennos Museum Center on Thursday evening and check-in at the conference registration desk on Friday morning.*



*Cindy Todd  
NAEA President*

The Dennos Museum Center is pleased to host this welcome event on Thursday, November 13th from 5:30 - 8:30 p.m. for the 2025 MAEA Conference. During the event, our NAEA President Cindy Todd will give a welcome address before a presentation by Grupo Folklorico Xochiquetzal, a dance group composed of volunteers from the local area who bring awareness of Latino culture and music to Northern Michigan. The evening will end with a reception including appetizers and drinks sponsored by Dennos Museum Center while attendees may explore the museum galleries and connect with colleagues.



**Friday,  
November 14**

**Check-in at the MAEA registration desk at the  
Grand Traverse Resort *Lower Level Tower Desk* from 7:00 a.m. - 7:00 p.m.**

### **Indulge in the Resort Experience: Support MAEA and Savor Delicious Meals!**



We're so excited to welcome you to our annual conference! As you plan your experience, we encourage you to consider purchasing your ticketed meals directly through the conference. While you might consider traveling to find options offsite, treating yourself to the resort's amazing culinary offerings provides a number of benefits, both for you and for our organization.

Every meal purchased through the conference directly contributes to the financial health of the Michigan Art Education Association. We believe that dining onsite is an integral part of the full conference experience, offering convenience, quality, and a direct way to support our vibrant community. Thank you for considering this opportunity to treat yourself while also strengthening our organization!

#### **7:30 - 8:50 a.m. Administrator's Breakfast**

Tower Ballroom

Ticketed Event: Members \$31, Administrators \$0



Invite your administrator to a plated breakfast including yogurt parfait, French toast with maple syrup, American potatoes, applewood bacon. Also included are chilled orange juice, bakery basket, fresh brewed coffee, decaffeinated coffee and hot tea.

Whether you had breakfast with us or on your own, join Jamie John for their keynote address.

#### **9:00 - 9:50 a.m.**

Tower Ballroom



#### **FRIDAY KEYNOTE**

**JAMIE JOHN**

Jamie John is a two-spirit trans and queer Anishinaabe and Korean-American multi-disciplinary artist. Jamie is a visionary artist and art educator dedicated to empowering students through accessible, DIY art practices. With a deep understanding of the challenges facing arts education, they champion zines, papercraft, bookmaking, and printmaking as powerful tools for self-expression, critical thinking, and social change. Jamie John believes that reflecting the times we live in is at the core of art education, fostering resourcefulness and creative freedom outside traditional institutions. Be sure to check out the ticketed zine making event that Jamie will be hosting on Friday afternoon!

**Friday,  
November 14**

**12:00 - 12:50 p.m.  
Regional Lunch**

Tower Ballroom

Ticketed Event: Members \$31



Grab your boxed lunch and meet your liaison and other members from your region. Boxed lunches include Great Lakes potato chips. Choose from the following three options.

**Option 1:** Hickory Smoked Turkey & Provolone | arugula, tomato, multi-grain bread; roasted potato salad with whole grain mustard; cookie

**Option 2:** Vegan Portabella Wrap | roasted red peppers, cucumber, garlic hummus, avocado, whole grain mustard, tomato tortilla wrap; quinoa salad with cucumbers and feta; granola bar

**Option 3:** Deli Italian Hoagie | honey ham, capicola, salami, sweet peppers, smoked provolone, lettuce, tomato, Italian vinaigrette, hoagie roll; pesto pasta salad; double fudge brownie

**1:00 - 2:50 p.m.  
Zine Workshop with Jamie John**

Ticketed Event: Members \$0

Zines are one of the most accessible and empowering art forms, perfect for creators of all ages, skill levels, and artistic backgrounds. These small, affordably made artist books are typically crafted from humble materials like paper, pens, and scissors, yet they offer limitless possibilities for expression. Whether you want to tell a personal story, explore a central theme, or simply organize your thoughts in a unique way, zines provide a versatile canvas.



This hands-on workshop will guide you through the process of creating your own zines, emphasizing both technical skill and resourceful conceptual thinking. We'll dive into various zine formats, teaching you easy and unique paper folding techniques that transform a single sheet of 8.5" x 11" copier paper into an intricate narrative. Join us to unlock the life-changing potential of zine-making with supplies sponsored by BLICK!



**Friday 12:00 - 4:00 p.m. AND Saturday 10:00 a.m. - 4:00 p.m.  
Garage Sale**

Council Room

Shop and Fill a Bag for \$5



*Are you cleaning out or looking for more resources? This garage sale benefits both!*

**Purchase a bag from the registration desk as your ticket into the garage sale.**

If you have resources that you have purged from your room, we would welcome the donation. Posters, still life objects, books, maps, sheet music, skulls, videos, are just a few of the items that people can use. Boxes or bags of these items can be dropped off at the Council Room Friday morning 10:00 a.m. - noon.

**Friday,  
November 14**

**5:00 - 7:30 p.m.  
Awards Reception**

Tower Ballroom

Ticketed Event Sponsored by College for Creative Studies:

Members - \$0



Please join us at the Awards Ceremony as we acknowledge the outstanding achievements and contributions of our honored art educators, retirees, and community partners in the Tower Ballroom. This event is free and includes socializing and light hors d'oeuvres sponsored by College for Creative Studies, which will take place at 5:00 before our Awards Ceremony begins at 5:30. A cash bar will be available.

**8:00 - 10:00 p.m.  
Pajamas and Zines**

Tower Ballroom

Ticketed Event: Members \$0

Slip into your comfiest pajamas and join us for a night of relaxed creativity! After a day of inspiring sessions, wind down with fellow art educators at our Pajamas and Zines social event. If you attended the zine making workshop with Jamie John, bring it to share! We'll have some supplies ready for you to make and exchange awesome zines, but consider bringing your favorites to use. It's the perfect way to **create, connect and inspire!**



**Saturday,  
November 15**

**Check-in at the MAEA registration desk at the  
Grand Traverse Resort *Lower Level Tower Desk* from 7:00 a.m. - 2:00 p.m.**

**7:30 - 8:50 a.m.  
MAEA Annual Business Breakfast**

Tower Ballroom

Ticketed Event: Members \$0



Prior to the MAEA business meeting enjoy a complimentary buffet style breakfast at the Grand Traverse Resort. Breakfast includes fresh scrambled eggs, potatoes, bacon, vegetarian sausage, fresh fruits and berries, breakfast breads, croissants, muffins, mini-Danish, fresh brewed coffee, hot tea, and assorted chilled juices. Mingle with your region, join your friends, and make a few new ones!

After breakfast, join us as we review MAEA's vision, strategic plan, and the other amazing ways members have showcased what they have done throughout this past year. Without you, our organization cannot grow and continue to support our future teachers and art education.



## Saturday, November 15

**9:00 - 9:50 a.m.**

Tower Ballroom



### SATURDAY KEYNOTE

**LYNNE RAE PERKINS**

Join celebrated children's author-illustrator Lynne Rae Perkins as she recounts her "unlikely and bumpy journey" to creating art for young people. Through stories of personal discovery and those who nurtured her creativity, Perkins's keynote, "Real Souvenirs from Imagined Places," will shine a light on the profound impact of art educators in today's world.

**12:00 - 12:50 p.m.**  
**Division Lunch**

Tower Ballroom

Ticketed Event: Members \$34



**Option 1:** Roasted Cauliflower Puttanesca | roasted cauliflower, sun dried tomatoes, capers, kalamata olives, garlic; classic Caesar salad – traditional romaine, parmesan croutons, Caesar dressing with crostini; tiramisu

Connect with and/or meet other people who work in your same division and create your own professional learning community. All plated lunches are served with a freshly baked roll and butter, dessert, freshly brewed coffee, decaffeinated coffee, hot tea, and iced tea. Choose from:

**Option 2:** French Cut Chicken Breast Piccata | with roasted garlic Yukon mashed potatoes with oven roasted asparagus; wedge salad – wedge of iceberg lettuce, tomato, gorgonzola, bacon crumbles, gorgonzola dressing; Traverse City Cherry Almond Torte

**1:00 - 1:50 p.m.**

Tower Ballroom



### SATURDAY KEYNOTE

**SAMANTHA TWOCROW**

Samantha TwoCrow, a distinguished artist and educator, is the Indigenous Education Director at Suttons Bay Public Schools and a proud member of Peshawbestown's Grand Traverse Band of Ottawa and Chippewa Indians. Her artistic journey is deeply rooted in her Indigenous heritage, having grown up surrounded by artists and learning traditional techniques from her family. Her mother, an Indian boarding school survivor, taught her bead work and quill work, while her maternal grandfather was a painter. Her grandfather, who lived on Beaver Island, shared knowledge of harvesting traditional materials like black ash, birch bark, deer hides, copper, and porcupine quills for basket making and beading.

Her exceptional bead work has garnered significant recognition, including awards at the prestigious Santa Fe Indian Market, where she has been an invited solo artist multiple times. Her work is nationally known in rotational exhibits also part of a collection at the Smithsonian National Museum of the American Indian. Closer to home, her work has been featured at The Children's Museum in Traverse City. Driven by her passion for art, she not only showcases her work globally but also recently dedicated herself to inspiring local children to learn about Indigenous art.

Beyond her artistic achievements, TwoCrow is dedicated to supporting Leelanau County students. She was recently honored with the Michigan Lottery Excellence in Education award, recognizing her impactful work as an educator. TwoCrow believes her creativity is "deeply rooted as an Indigenous woman," emphasizing the intelligent and sustainable cultural traditions of her people.

## Saturday, November 15

### 5:00 - 6:30 p.m. Social Hour

Ticketed Event: \$5  
Tower Prefunction



Come hang out and socialize outside of the Tower Ballroom with light hors d'oeuvres and a cash bar.

### 6:00 - 9:00 p.m. Artisans' Market

Mackinac Room



Come out and support your fellow MAEA members as they showcase their work and talents. Take home a gift for yourself or someone special, you won't find a better place to go shopping for art, we promise! Stop by the Mackinac Room on Saturday night from 6:00 to 9:00 p.m. to meet the artisans.

If you would like to showcase your artwork, please consider being one of the amazing artisans. Please contact Roger Drabant at [vicepresident@miarted.org](mailto:vicepresident@miarted.org) or Jennifer Kay-Rivera at [jrivera@wcskids.net](mailto:jrivera@wcskids.net).

### 6:00 - 9:00 p.m. Silent Auction

Mackinac Room



Get in the winning spirit as you outbid other attendees for great items. Not only will you have a fun time and take home some amazing items, but you will also help a great cause. The MAEA Silent Auction will raise money to donate to the MAEA Scholarship Fund. Our members have donated original artwork and various items. View the items and place your bid inside the Mackinac Room Saturday night at the Gala. The highest bidder will be announced and the winners may pick up their item(s) at the Gala on Saturday night.

If you have an item or piece of original artwork to donate and won't be attending the conference, please fill out this Google Form and/or contact Emily Miller at [emvmiller.art@gmail.com](mailto:emvmiller.art@gmail.com). Otherwise, donated items or artwork can be dropped off at the conference registration area. Thank you!

## Saturday, November 15

**7:00 - 10:00 p.m.**

### **Create, Connect, Inspire Gala: A TASK Party!**

Tower Ballroom

Ticketed Event: Members \$5



Get ready to unleash your inner maker and celebrate creativity in style at our Saturday evening gala! Inspired by Oliver Herring's iconic TASK parties, this immersive evening is designed for radical self-expression and collaborative art-making. We encourage you to come as you are or arrive in your most innovative DIY or handmade attire. Whether it's a reconstructed masterpiece, a blank canvas or an outfit adorned with your unique artistic flair, come ready to play!

We'll provide a vibrant array of supplies sponsored by BLICK for you to craft handmade accessories on the spot. Collaborate with fellow art educators, experiment with new materials, and add finishing touches to your look. A local DJ and cash bar will make this an evening you won't want to miss!

## Sunday, November 16

**10:00 a.m.**

### **MAEA Council Meeting**

Tower Ballroom



MAEA council members will be meeting Sunday morning at 10:00 a.m. in the Tower Ballroom. All members are invited to attend our meeting even if you are not on the council yet. Volunteer leadership in a non-profit service organization takes members like you who offer up your time and passion to help the overall mission of the Michigan Art Education Association. We have openings on the council and welcome you to join us!

**11:00 a.m.**

### **2026 Conference Planning Meeting**

Tower Ballroom

Share your ideas for 2026 and join us as we explore options in planning our next conference in Port Huron!



## CALLING ALL RETIREES

Are you retiring this year or know someone who will be? Are you planning on attending the fall conference? If yes, MAEA would like to recognize all honored retirees/emeritus members for their dedication at the awards banquet on Saturday. Please contact Tammy Noirot, [tamnrt@gmail.com](mailto:tamnrt@gmail.com) or call or text 269-816-2949.



### COMPLIMENTARY WINE TASTING!

Chateau Grand Traverse ([cgtwines.com](http://cgtwines.com)) would like to extend a complimentary guided tasting for attendees of the 2025 Fall MAEA Conference who show their badge! The guided tasting consists of guests selecting five wines, and the server guiding the guests through the wines.

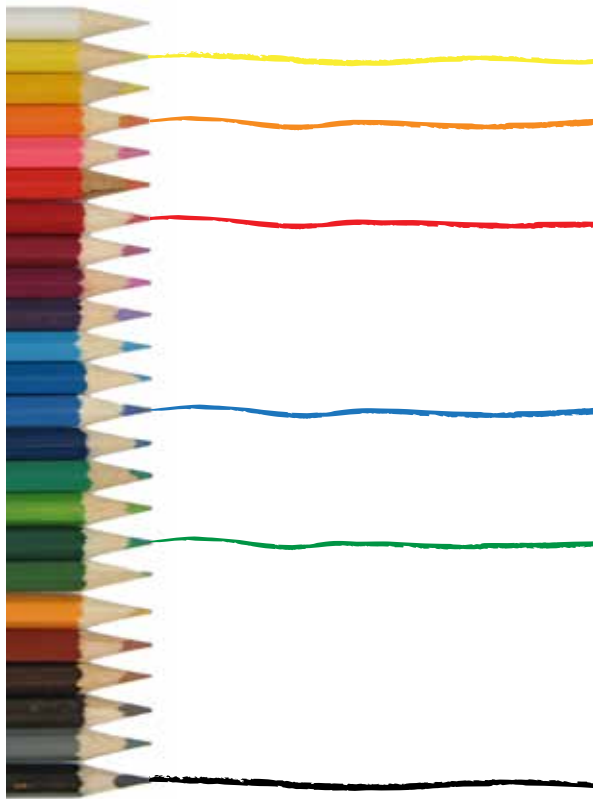
In addition to the guided tastings, Chateau Grand Traverse offers flights and wine by the glass to be purchased, as well as small bites such as charcuterie boards, German pretzels, and personal sized flatbreads.

## EXPLORE TRAVERSE CITY ART GALLERIES AND MUSEUMS!



- ~ **The Alluvion** - 414 E Eighth St, Traverse City, MI 49686
- ~ **Crooked Tree Arts Center** - 322 Sixth St, Traverse City, MI 49684
- ~ **Dennos Museum Center** - 1410 College Dr, Traverse City, MI 49686
- ~ **Higher Art Gallery** - 219 E Front St, Traverse City, MI 49684
- ~ **Michigan Legacy Art Park** - 12500 Crystal Mountain Dr, Thompsonville, MI 49683
- ~ **Mural Walk in the North Boardman Lake District**  
(<https://traversetrails.org/trails/boardman-lake-loop-trail/> ) URL for printed version
- ~ **The Music House Museum** - 7377 US-31, Williamsburg, MI 49690





## We Appreciate Art Teachers!



We support and value creative human expression and care about making the world a better place. We are inspired by and appreciate artist Jonathan Martinez for bringing awareness to the Hector's Dolphins, Hawksbill Sea Turtles, Monarch Butterflies, and more. **Share what inspires you and your students #GeneralPencil**

New How to Draw Endangered Species Book & Kit Coming Soon - Sign up @ [GeneralPencil.com/HTDESW](https://www.GeneralPencil.com/HTDESW)

Artist:  
Jonathan Martinez  
@ Art.of.the.Endangered



**GeneralPencil**

Visit [GENERALPENCIL.COM](https://www.GeneralPencil.com)  
for Videos, Techniques, and Artist Stories

PENCIL MAKERS Since 1889  
**GENERAL PENCIL COMPANY, INC.**  
JERSEY CITY, NJ USA

## Getting ready for the fall conference - November 13-16!

**1** Make sure your membership is current through November 16, 2025. If it is not, get it renewed as soon as possible, as this will help when registering for the conference.

**2** Reserve your hotel room – see page 11 for details.

**3** Online registration **opens September 1** and **closes October 31**. The time period has been lengthened; there will NOT be any time extensions.

**4** When registering online, remember only ticketed events/workshops will be visible. All others are first come, first served.

**5** Check-in is at the Grand Traverse Resort **Lower Level Tower Desk** (map on page 22).

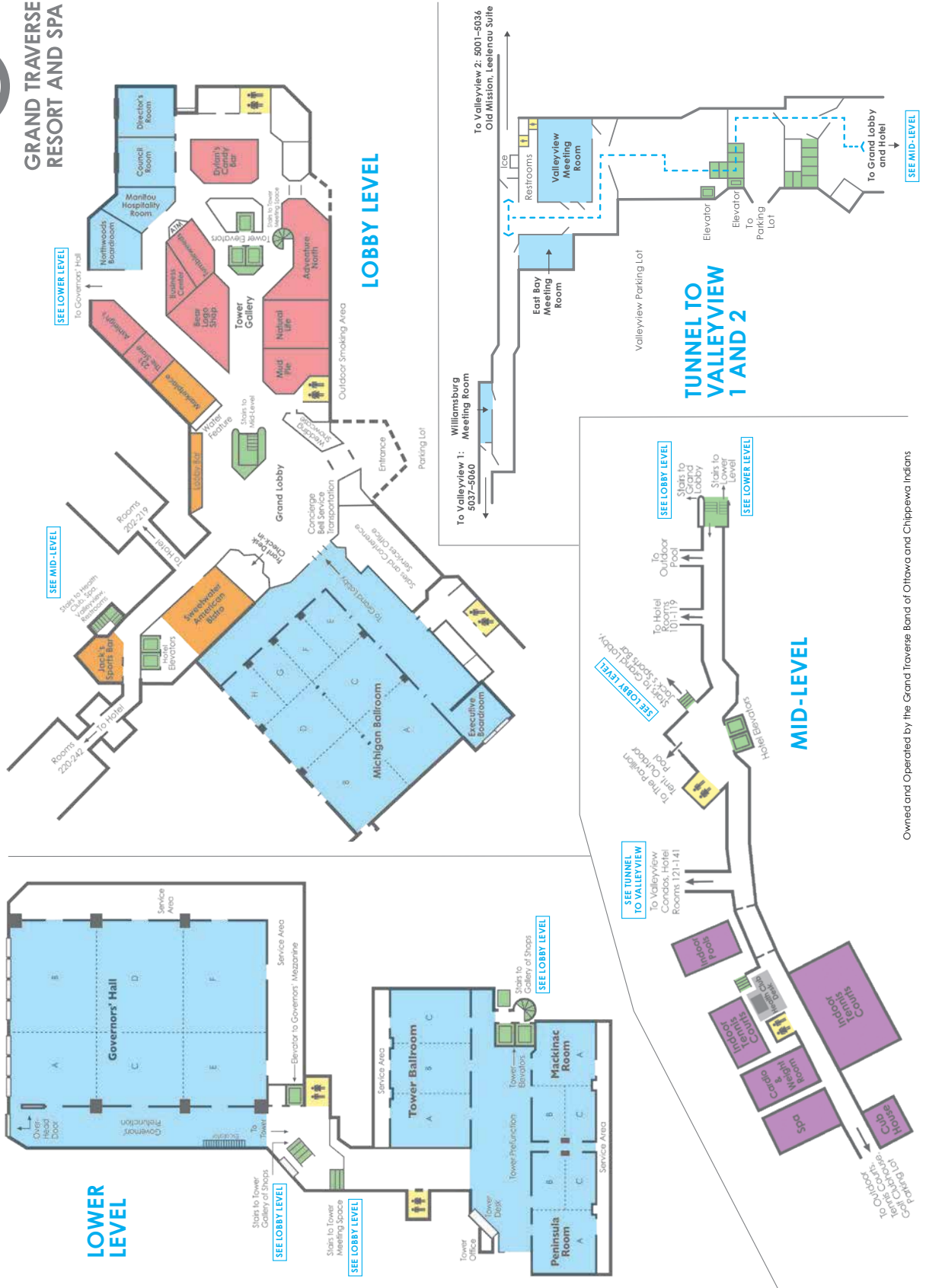
**6 HAVE A GREAT CONFERENCE!**

# GRAND TRAVERSE RESORT AND SPA INTERIOR MAP

- Meeting Space
- Dining
- Gallery of Shops
- Public Restrooms
- Elevators / Stairs
- Health Club / Spa / Cub House / Indoor Pools / Indoor Tennis Courts



## GRAND TRAVERSE RESORT AND SPA



# MAEA Calendar - October 2025 - May 2026

**October 3, 2025**

7:00 p.m. Online e-board meeting

**October 4, 2025**

10:00 a.m. Council meeting  
via Zoom online

**November 13-16, 2025**

**Fall Conference, Grand Traverse Resort**

**Thursday - Sunday**

E-Board meeting TBA

**Saturday**

Business Meeting and Breakfast

**Sunday - 9:00 - 9:50 a.m.**

Council meeting

**December 11, 2025**

7:00 p.m. Budget meeting  
via Zoom online

**January 10, 2026**

9:00 - 10:00 a.m. E-Board meeting online  
10:30 a.m. - 1:30 p.m. Council meeting  
via online

**March 5-7, 2026**

**NAEA National Convention**  
Chicago, IL

**March 14, 2026**

Hang the Show

**March 28, 2026**

State Show Reception  
Hickman Gallery, Adrian College  
Liaisons attend and help take down  
art to return to their Regions

**May 1, 2026**

7:00 - 8:00 p.m. E-Board online

**May 2, 2026**

Council Meeting (Location TBD)  
Council 10:00 a.m. - 12:00 p.m.  
Leftover MAEA Art pick-up

**February 27, 2026**

7:00 - 8:00 p.m. E-board online

**February 28, 2026**

10:00 a.m. - 2:00 p.m. Council meeting  
MEA Headquarters  
> Lunch > Meeting  
9:00 - 10:00 a.m. MAEA Art drop-off



## How to Navigate the Conference Session Information Online

**Session Titles may be prefaced with 'TC', which means**

**Ticketed Session.** These sessions are either limited audience or have a fee and therefore require a "ticket."

Meals and tours will have actual tickets in the registration envelope you receive when you check in at the conference.

Hands-on ticketed sessions provide a class list to the presenter with NO individual ticket in the envelope. There will be a "Big Ticket" with these sessions listed for you to check in at the session.

### SESSION PREFIXES

Session Titles may be prefaced with a letter:

'K' which means a Keynote Speaker.

'T' which means a Tour.

'M' which means a Meal.

'R' which means a Reception.

**Icon for a Bus or Car = Offsite**

**Icon for Footprints = Walkable**

### Workshop Audience Codes:

Remember these are suggestions not mandates.

All members are welcome to all sessions.

**AA** = All Audiences

**HS** = High School

**MS** = Middle School

**EL** = Elementary

**HO** = Hands-On

**RE** = Retired Educators

**TE** = Technology

**ST** = Student Teacher

**MU** = Museum

**HE** = Higher Education

**AS** = Admin/Supervisor

**CD** = Cultural Diversity

**PE** = Physical/Emotional

**SP** = Other Special Needs

**O** = Other

**CG** = Cognitive Impairment

**CI** = Curriculum/Instruction

**The conference session format you will find online gives you all the information as follows:**

TIME: [12:00-3:00 p.m.]

SESSION TITLE:

LIMIT OF PARTICIPANTS: [may be limited due to hands-on, or room size]

TICKETED: [\$\$ cost for session]

SESSION DESCRIPTION:

REPEATS: [or not repeated]

AUDIENCE: [note session key categories]

PRESENTER: [name, position, school, business]

## Important: Registration Instructions

If you plan to register online at:

**<https://conference.miarted.org/>** ONLY TICKETED SESSIONS [hands-on, medleys, meals] OR TOURS are listed on the registration site. **Please read the following helpful information:**

1. Membership ID number: if your membership has or will expire before October 31, you must renew it. You can renew at: <http://www.miarted.org/about.php> (under Membership) or go to the NAEA site at: <http://www.arteducators.org/promo/renew>

***If you renew after August 1, please retain a copy of your confirmation from NAEA and bring it with you when you stop at registration.***

2. **If you are a new/recent member and are not registered with MAEA systems yet, the MAEA online registration system will give you a temporary number so you can still register.** MAEA and NAEA **require** your membership to attend the conferences. We will send you reminders to fulfill this responsibility if we do not have confirmation from NAEA by our next membership reports.

3. Many of our members find that they must re-enter the online registration site to adjust session selections. To do so, you will need **to use the same Membership ID and Last Name as you initially set up.** If you do not, you will be listed multiple times, and **will be charged fees each time you re-enter.** These can be cleared up, but adds to the challenge of accounting for the number of members attending. Should you have problems, email Teri at [registrar@miarted.org](mailto:registrar@miarted.org) or Jane at [executivesecretary@miarted.org](mailto:executivesecretary@miarted.org).

4. MAEA conference now creates class lists for the presenters for the ticketed sessions; therefore, **you will not be able to register for certain sessions for anyone else**, as your name will be on the list multiple times. You will be allowed to purchase only one ticket for each ticketed session.

5. Guests and spouses must be registered on the Special Guest Registration site or Special Registration form. This link is found on the main registration login page. **You will not be able to select a meal for more than one ticket.** You must register that additional ticket or tickets, in the guest registration.

6. All receipts from both snail mail and online registration are emailed. Watch for emails from: [registrar@miarted.org](mailto:registrar@miarted.org). If your payment is not made when registering online, you will receive an email reminder notice. If this is not paid, prior to the conference, you will not be guaranteed any of the ticketed sessions you have requested. You will need to register at onsite prices for the sessions that are still available.

7. *No conference badges will be included in envelopes at the registration desk until all payments are completed.* If payment is not rendered prior to the close of pre-registration, your registration will be canceled.

8. *Your onsite registration envelope will include your receipt and tickets for any meals or tours that you have selected.* "Ticketed" hands-on sessions provide the presenter with a class list; **you do not receive a separate ticket for each session. You will receive one "Big Ticket" listing ticketed events.**





## Conference Information and Policy

**Online Registration will open September 1, 2025 and will close October 31, 2025.**

**You must be a member of NAEA/MAEA and pay a conference registration fee to attend this conference, unless you are a guest.** [see Special Registration guidelines]

### Membership

**You must be a member of NAEA/MAEA to attend this conference.** If you are not, please complete the membership form on the back page of this edition. You may also go to the MAEA website [www.miarted.org](http://www.miarted.org), click on *About / Membership* and follow the directions. If you are joining after the deadline listed on the conference registration form, then you must MAIL this application (make a copy for your records) and your check to NAEA:

NAEA Membership  
901 Prince Street  
Alexandria, VA 22314

*If you renew after August 1, please retain a copy of your confirmation from NAEA and bring it with you when you stop at registration.*

If you are a new or renewing member, your membership fee can now be included in your conference registration fee. Please remember to fill out and include the membership application.

### Pre-Registration Notification



All members have the option of registering through the traditional mail process or registering online at <https://conference.miarted.org/>.

**The online registration information includes TICKETED or LIMITED sessions ONLY.** Non-ticketed sessions do not require pre-registration. Everyone pre-registering not later than **October 31, 2025 will be emailed a registration receipt. You must include your email in the registration.** If you do not include an email where you can receive the receipt, then you will receive your receipt at the conference when you pick up your registration materials. *All receipts from online registration are emailed.* Watch for emails from: [registrar@miarted.org](mailto:registrar@miarted.org).

**YOU MUST PUT THIS EMAIL ADDRESS IN YOUR ADDRESS BOOK TO RECEIVE THE EMAILED RECEIPT. NO RECEIPTS WILL BE MAILED.**

Note: Most ticketed workshops will sell out very quickly. Registrations received after the pre-registration deadline of October 31, 2025 will be handled in order of their arrival with receipts handed out at the conference registration site.

### Pre-Registration Payment

Payment is required at the time of online registration. Two options are available: credit card or check. *Registration payment onsite will be higher. There will be no admission to the conference without complete payment. If your school district or university plans to pay your registration, and does not make payment prior to onsite check in, you will be required to pay the entire fee to participate in the conference. It is your responsibility to then seek reimbursement from your district or university. If payment is not received by October 31, 2025, your pre-registration will be canceled. Any ticketed sessions you have reserved will then become available for onsite registration. If there are extenuating circumstances, please contact Teri Zinn at [registrar@miarted.org](mailto:registrar@miarted.org) or Jane Inhulsen at [executivesecretary@miarted.org](mailto:executivesecretary@miarted.org) no later than the close of online registration.*

### Special Registration

**A Special Registration** form for school administrators, guests of award recipients, and guests of members is provided online. These special guests should fill out the *Special Registration* form online. This form will allow them to reserve tickets for meal selections or a ticket for the Saturday night Gala. Spouses who are attending those meals or events listed above should also register as a Special Guest.

## Conference Information and Policy *continued*

### Onsite Registration Hours

**Thursday: 3:00 p.m. – 6:00 p.m.**

**Friday: 7:00 a.m. – 7 :00 p.m. | Saturday: 7:00 a.m. – 2:00 p.m.**

### Onsite Registration Location

Registration may be completed onsite at the Grand Traverse Resort **Lower Level Tower Desk** upon arrival. However, the **onsite registration fee is higher** in all member categories. This also means standing in line longer with less chance of obtaining desired ticketed workshops. Pre-registration is highly recommended.

### Sessions

Some special guest artists, workshops, tours and events have restrictions. Please note: **TICKETED sessions** in the program are due to fees, room size and presenter requests. Non-ticketed sessions will be a first come, first served at the door of the session and should NOT be listed on your registration form. **Actual TICKETS** are provided in your onsite registration envelope for tours and meals. Class lists are provided for the session presenter and for all other ticketed sessions.

***Nametags need to be worn at all times.*** The nametags give you access to the Vendor area, workshops, tours and meals. Tickets for ticketed events must be presented at the time of entry.

### Refunds

It is NAEA/MAEA Policy that all requests for refunds are submitted in writing, stating the reason that you expect a refund. A \$50 processing fee is charged for all cancellations [regardless of the date requested].

### Conference Materials for Participants

Presenters must check in at conference registration at the Grand Traverse Resort **Lower Level Tower Desk**. You will pick up workshop information and event materials, presenter information and gift bag there. Thank you for contributing your love of art to our members.

***Conference nametags must be worn everywhere!*** This includes the Vendor area, workshops, meals, and tours. You will be denied access without your nametag!

### Important Advisory

Presenters graciously share their ideas and time for your benefit. Presenters have enough materials on hand for the limit listed in their session information. Please respect these limits. Arrive on time. Attend the entire session. Display professional and courteous behavior at all times. Student Classification means FULL-TIME students.

### Open Meeting Policy

NAEA/MAEA policy states all sessions held within the framework of its conference are open to all NAEA/MAEA members who are registered for the conference. The only exception is for ticketed functions, including meals, workshops or receptions that may be sponsored by other groups.

### Tax Deduction

To qualify for a tax deduction, a person must be registered for the conference. Treasury regulation No.1.1625 permits income tax deduction for educational expenses [registration fees and cost of travel, meals, and lodging] undertaken to:

1. Maintain or improve skills required in one's employment or other or business;
- OR**
2. To meet express requirements of an employer or law imposed as a condition to retention of employment, job status, or rate of compensation. [IRS Publication #508, U.S. Government printing office] Please retain your pre-registration confirmation and receipts for your records and reimbursement from your district. All TICKETED events are non-refundable. Executive Board will consider refund requests for dire circumstances, excluding the \$50 processing fee and non-refundable events.

### Conference Materials for Participants

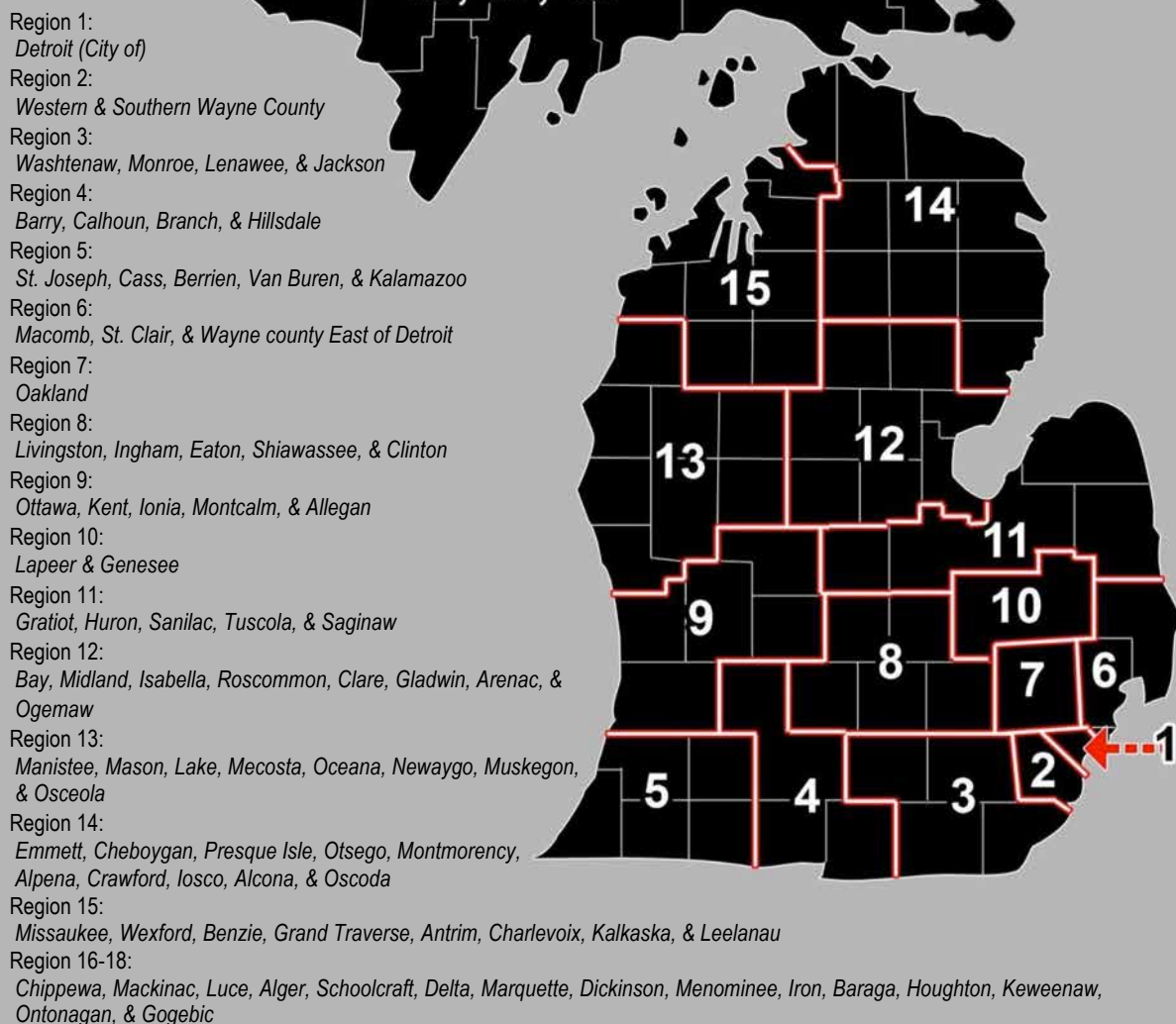
*Registration will be held at the Grand Traverse Resort **Lower Level Tower Desk**. All materials may be picked up at the registration site. Look for all open and canceled workshop events in this area as well.*

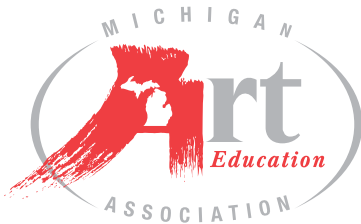
***Conference nametags must be worn everywhere!*** This includes the Vendor area, workshops, meals, and tours. You will be denied access without your nametag!



## Michigan Art Education Association REGIONAL DIVISIONS & LIAISONS

THE COUNTY IN WHICH YOU TEACH DETERMINES YOUR REGION





Jane Inhulsen  
Executive Secretary Communications  
18674 Goldwater Road  
Westfield, IN 46062

Change Service Requested

## NAEA/MAEA Membership Application

**Membership with MAEA is membership to both NAEA and MAEA:**

Mail to: NAEA Membership, 901 Prince Street, Alexandria, VA 22314 **(Make a copy for your records.)**

-OR- Membership online: [www.miarted.org](http://www.miarted.org) click on *About*, then click on *Membership*

### Please Print All Information Below:

☐ New ☐ Renewal - I.D. Number \_\_\_\_\_

Name: \_\_\_\_\_

Address: \_\_\_\_\_

City/St./Zip: \_\_\_\_\_

Home Phone: (\_\_\_\_\_) \_\_\_\_\_

Email: \_\_\_\_\_

MI County you teach/work in: \_\_\_\_\_

School District: \_\_\_\_\_

Work: (\_\_\_\_\_) \_\_\_\_\_ Fax: (\_\_\_\_\_) \_\_\_\_\_

### Membership 104/204

Categories: \_\_\_\_\_ Dues: \_\_\_\_\_

☐ Active \$100

☐ Associate \$100

☐ Retired \$70

☐ First Year Professional \$85

☐ Full-Time Student \$50

School: \_\_\_\_\_

Graduation Date: \_\_\_\_\_

☐ Institutional \$225

SUB TOTAL \_\_\_\_\_

Subscription Option:

☐ Studies in Art Education \$20

TOTAL \_\_\_\_\_

Students: Attach photocopy of current student I.D.

### Please check ONE professional level where you spend over 50% of your professional time:

☐ Elementary ☐ Middle Level ☐ Secondary ☐ Museum ☐ Higher Ed

☐ Supervision/Administration ☐ Full Time Student ☐ Retired Member

### Payment Information

☐ Check Enclosed -- **PAYABLE TO NAEA** (Tax deductible) 501 C3 Membership

☐ Charge -- ☐ VISA ☐ MasterCard

Credit Card Number \_\_\_\_\_ Expiration Date \_\_\_\_\_ 3-Digit Security Code \_\_\_\_\_

Signature \_\_\_\_\_ Charge by phone 1(800) 299-8321

Membership dues include \$25 for a membership subscription to Art Education and \$15 for a membership subscription to NAEA News. A separate rate is established for non-member subscriptions.